

SHARP®

ENHANCED MONOCHROME WORKGROUP DOCUMENT SYSTEMS 



MX-M260
MX-M310

MX-M260/MX-M310

In today's fast-paced business environment, you need to operate at peak efficiency. And with Sharp's MX-M260 and MX-M310 Document Systems, you'll be able to raise office productivity to a whole new level. With enhanced versatility, the MX-M260/M310 Document Systems deliver everything your business needs to get ahead offering 26/31-ppm copying and printing, convenient networking, and integrated multifunction capabilities. These Document Systems are ideal for busy departments and workgroups. Available features include a 100-sheet reversing document feeder, auto duplexing, 1200 x 600 dpi (enhanced)



laser output, and a large 8.1" (measured diagonally) touch-screen LCD display that makes operation easy and intuitive. New micro-fine toner technology offers sharp, high-quality images page after page. And best of all, the modular design makes it easy to add functionality to adapt to your changing business needs. Optional multifunction capabilities include PCL® 6 and Postscript® 3™ compatible network printing, network scanning and Super G3 faxing. Embedded software delivers easy-to-use web-based management tools as well as state-of-the-art security features that help your business protect intellectual property and meet regulatory compliance.



Sharp's MX Monochrome Series workgroup Document Systems offer advanced features to enhance productivity and improve workflow

ENGINEERED FOR PERFORMANCE

FLEXIBILITY
PRODUCTIVITY
INTEGRATION
USER-FRIENDLY

- Large 8.1" (measured diagonally) touch-screen LCD display for easy operation
- 100-sheet Reversing Single Pass Feeder
- Mixed size original detection¹
- ID Card Shot feature conveniently copies both sides of an ID card onto a single sheet of paper
- Automatic trayless duplex copying and printing
- Electronic sorting
- JBIG speed-enhanced PC printing system
- New micro-fine toner technology
- USB-2.0 Interface
- 1,100-sheet standard paper capacity expandable to 2,100 sheets
- 100-sheet multi-sheet bypass tray
- Integrated Super G3 Fax Option
- Optional 500-sheet compact inner finisher
- IPv6 support and advanced network security²
- Integrated network scanning option with available Application Integration
- Optional Data Security Kit
- Additional features include Job Build, Stream Feeding, Booklet Copy, Dual Page Copy, Margin Shift, Multi-Shot Copy, 100 Department Codes, Job Programs, Edge Erase, Image Reversal, XY Zoom, Image Rotation



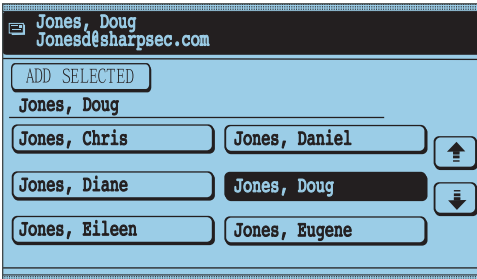
¹ Detects mixed letter/legal or lateral feed letter sized originals.

² Some features require optional equipment.

ADVANCED WORKFLOW MANAGEMENT



Add centralized document distribution capability to your Document Systems with the optional Network Scanning Kit.



With the MX-M260/M310 Document Systems Network Scanning Kit with LDAP, users only need to enter the first few characters of the destination e-mail address.

User-friendly features help increase document workflow efficiency and productivity to optimize day-to-day operations

Scan, Save and Send

Transform the MX-M260/M310 Document Systems into centralized document distribution hubs with the optional Network Scanning Kit. Advanced features include Scan to E-mail, Scan to Desktop, Scan to FTP, and Scan to URL. Scanning allows you to minimize costs associated with couriers and send documents instantly for optimum efficiency. Documents can be saved in today's most widely used file formats including PDF and TIFF. For added security, the Sharp MX-M260/M310 supports User Authentication, so you can restrict network scan access to authorized users.

Intelligent Application Integration

To help you manage your workflow, Sharp's optional Application Integration Module (MX-AMX1) enables you to add information fields to your scanned documents, thereby automating tasks that once took several steps. This information is passed along with your document to an integrated application, enabling you to initiate your workflow right from the MX-M260/M310 Document Systems touch-screen control panel.

Built-in LDAP Support

Need to send your scanned document but don't know the recipient's address? Integrated LDAP (Lightweight Directory Access Protocol) support automatically locates the address for you. Just enter the first few characters of the recipient's name, and a list is displayed. It's that simple!

Scan to E-mail

Send documents to any e-mail address with the touch of a few buttons. You can even enter a unique filename for the scanned document, as well as select the sender and enter information into the subject fields. When the recipient receives the e-mail, these fields reference specific information about the attached document, making it easy to locate or reference later on.

Scan to Desktop

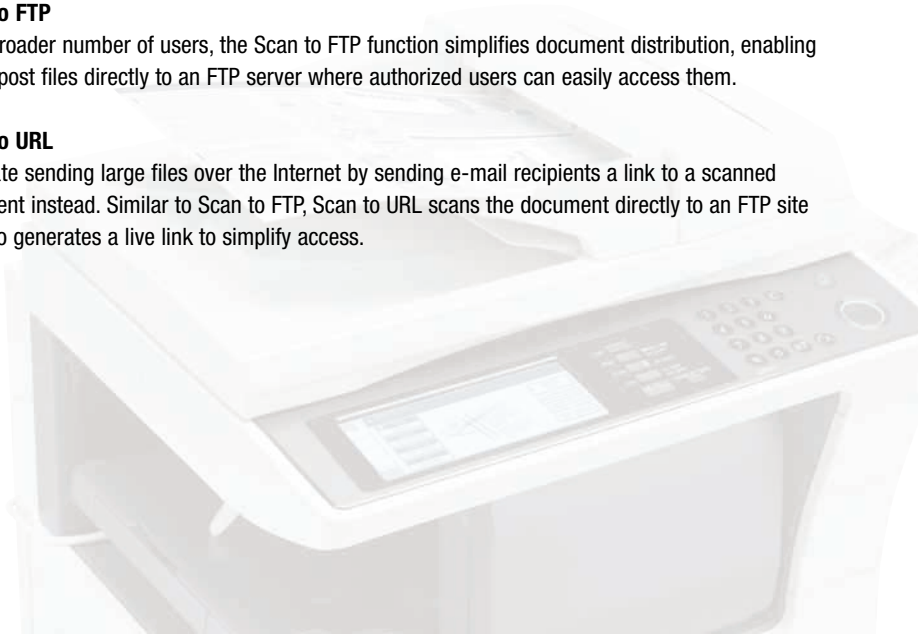
Scan documents directly to your desktop computer for ease and efficiency. Retrieval is virtually effortless, and you can then edit, distribute or store your documents. The Network Scanning Kit includes Sharpdesk® document management software, powerful tools designed to help you manage your scanned documents with incredible ease and flexibility.

Scan to FTP

For a broader number of users, the Scan to FTP function simplifies document distribution, enabling you to post files directly to an FTP server where authorized users can easily access them.

Scan to URL

Eliminate sending large files over the Internet by sending e-mail recipients a link to a scanned document instead. Similar to Scan to FTP, Scan to URL scans the document directly to an FTP site but also generates a live link to simplify access.



HEIGHTENED SECURITY



The optional Super G3 Fax module provides high-speed facsimile functions in a powerful LAN environment.

Advanced versatility with Super G3 fax functionality

Speedy Super G3 Faxing

Reduce extra peripherals and costly consumables with the optional Super G3 Fax Module. The MX-M260/M310 Document Systems double as powerful workgroup facsimiles with lightning-fast speed. With advanced features including Duplex Scanning, F-Code Communication, and Ledger-Size Reception, the MX-M260/M310 can easily keep up with the requirements of busy workgroups. Designed for moderate-to-heavy usage, you can easily broadcast up to 200 destinations, as well as store up to 500 auto-dial numbers—all of which can be managed through the intuitive touch-screen display.

The Super G3 Fax Module also provides powerful LAN faxing allowing you to send a fax right from your desktop PC! With an intuitive user interface, sending a fax from your desktop is as easy as printing—just select SEND and you're done!



"Most Secure MFP
Range" Award—5th
Consecutive Year

PRIVACY

AUTHORIZATION

CONFIDENTIALITY

PROTECTION

Innovative document and device protection helps ensure confidentiality

To help protect your data, the MX-M260/M310 models offer several layers of security, making Sharp the optimum choice to protect employee privacy and intellectual property.* As a leader in office equipment security, Sharp makes it easier for any business or government entity to safely deploy digital copying, printing, scanning and faxing.



Account Codes

Account management enables administrators to control access to the MX-M260/M310 functions (Copy, Scan, Fax, and Print) and to monitor the usage.



Helps keep documents confidential

To help protect your printed documents from unauthorized viewing, the MX-M260/M310 support IPPS/HTTPS protocol and offer confidential printing that requires users to enter a PIN code in order to print a queued document.*



Network scanning access

To help protect your network from unauthorized e-mail communications, the MX-M260/M310 support user authentication, requiring users to login before performing any network scanning operations.*



Control device access over the network*

To help restrict access to the device over the network, the MX-M260/M310 offer Secure Socket Layer (SSL Encryption), IPv6 and IPsec, IP/MAC Address Filtering, Protocol Enable/Disable and Port Management for maximum security.*



Secure Data Erase

To help protect your data, Sharp's optional Data Security Kit erases the memory in the MX-M260/M310 by overwriting the document data, offering an unprecedented level of assurance.



Tracking and auditing information

Legislation and industry policies require companies to be more aware of information flow from their offices. Sharp offers additional hardware/software which allows users to control, access and track usage of each device on the network.

These scalable security offerings aim to protect your intellectual property, preserve confidential information and help your business to meet regulatory requirements, such as the Health Insurance Portability and Accountability Act (HIPAA), and the Gramm Leach Bliley Act (GLB). For additional information visit: www.sharppusa.com/security

*Some features require optional equipment.

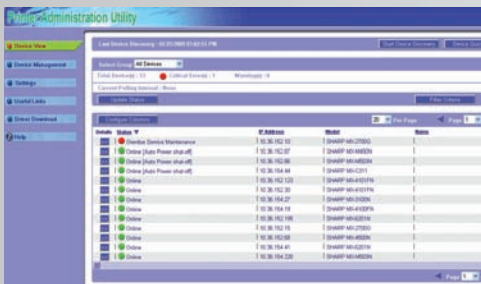


ADVANCED SOFTWARE TO OPTIMIZE EFFICIENCY

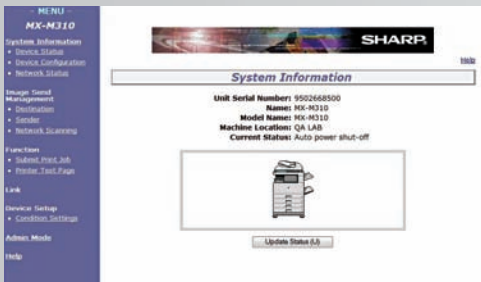
Get on the fast track in today's competitive business environment with Sharp's powerful and dynamic MX Monochrome Series

Sharp's Powerful Administration Utility Suite

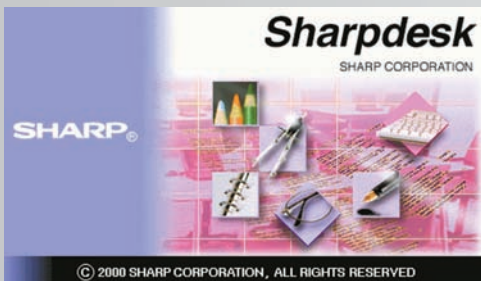
To help you manage all of the MX-M260/M310 leading-edge features, Sharp developed the Administration Utility Suite, a suite of integrated, easy-to-use tools that simplify everything from installation and monitoring to operating and tracking your Document System.



Printer Administration Utility.



Embedded Web Page.



Intuitive desktop display features thumbnail viewing and file search allows searching by file name, keyword, or thumbnail.

- The MFP Home Page provides centralized, web-based management for administrators and users. Administrators can control device configuration, network settings, IP filtering and protocol control—without ever leaving their desk. Users have the ability to manage scan destinations and profiles, as well as access custom web links such as My Sharp™, a dedicated customer-care website that offers resources and information specific to your MFP.



- Printer Administration Utility (PAU), designed primarily for IT Managers and administrators, simplifies printer installation and configuration. This robust utility also allows administrators to remotely monitor any SNMP-compliant printer on the network—regardless of the manufacturer, enabling all printers to be managed through one single interface.
- For desktop users, Printer Status Monitor's easy-to-use interface allows you to view the print queue and printer conditions—paper levels, toner and more—before you send your job to print.
- To enhance system reliability and maximize uptime, Sharp's Remote E-mail Diagnostics (R.E.D.) enables IT Managers and Authorized Sharp Dealers to automatically receive e-mails regarding operation and performance of their Document System.

Sharpdesk Software

Convenient Document Management at Your Command — Powerful. Flexible. Intuitive. Designed to work seamlessly across Sharp's entire line of document imaging systems, Sharpdesk software enables you to integrate scanned documents into your daily workflow. The user-friendly interface allows you to view document thumbnails in over 200 file formats. Advanced features help you organize, edit—even combine scanned files—for maximum productivity.



MX-M260/MX-M310 SPECIFICATIONS

MX-M260/M310 Document System Main Specifications

Type	Digital Multifunction System
Standard Functions	Copy, PC Print
Optional Functions	Network Printing, Network Scanning, Super G3 Fax, Application Integration ¹
Copy System	Dry electrostatic transfer system
Originals	Sheets, bound documents
Original Size (Max)	11" x 17"
Copy Size	Min. 5 1/2" x 8 1/2", Max. 11" x 17"
Copy Speed	26/31 copies per minute (8 1/2" x 11") 18/24 copies per minute (8 1/2" x 11"R) 16/20 copies per minute (8 1/2" x 14") 14/17 copies per minute (11" x 17")
Continuous Copy	Maximum 999 copies
First Copy Out Time	MX-M260: 4.8 seconds MX-M310: 4.5 seconds
Warm Up Time	MX-M260: 23 seconds MX-M310: 25 seconds
Zoom Range	25% to 400% in 1% increments (with RSPF 50%-200%)
Fixed Zoom Mode	25%, 50%, 64%, 77%, 100%, 121%, 129%, 200%, 400%
Exposure System	Fixed optical source, slit exposure (stationary platen) with automatic exposure
Original Feed System	Standard: 100-sheet reversing single pass document feeder (RSPF) with stream feeding mode, mixed letter/legal size original detection, and mixed (lateral feed) letter/ledger original size detection. ²
Paper Feed System	Standard: (2) 500-sheet paper cassettes Standard: (1) 100-sheet manual bypass tray Optional: (1) 500-sheet paper feed unit or (1) 1000-sheet paper feed unit (500 x 2)
Paper Type	Paper Cassettes: 15-28 lb. standard or recycled bond, or 21-28 lb. special paper. Bypass (single-sheet feed tray): 14-34 lb. standard or recycled bond paper, OHP, labels, and thick paper up to 54 lb. Bypass Tray (multi-sheet feed): Up to 100 sheets 14-21 lb. standard or recycled bond paper, up to 40 sheets for OHP film and labels, up to 30 sheets for 21-54 lb. thick paper, up to 5 sheets for envelopes (#10).
Memory (total)	32 MB total, up to 1,056 MB option
Copy Resolution	Scan: 400 dpi; Copy output: 600 dpi
Halftone	256 gradations/2 levels
Copy Features	Scan-Once Print-Many, electronic sorting, Auto Paper Sensing (APS), Auto Magnification Sensing (AMS), auto tray switching, manual zoom, job build, split scan, booklet copy, multi-shot, reverse image, cover page, department control, job programs, auditor/coin vend ready, toner save mode, and total counter
Department Control	100 profiles
Output Tray	Main output tray 500 sheets (face down),
Capacity	100 sheets in optional Job Separator Tray, and 500 sheets in optional inner finisher (output tray is user selectable)
Power Requirement	AC 120 V, 60 HZ, 12 Amps
Power	Maximum 1450 W, pre-heat 90 W,
Consumption	sleep mode 1.2 W
Weight	Approximately 114 pounds
Dimensions	Approximately 24¾" (w) x 25" (d) x 31¼" (h)

JBIG Speed-Enhanced Printer Function (standard)

PDL	Sharp SPLC host-based with JBIG compression
Resolution	600 dpi, 1200 x 600 dpi (enhanced)
Print Speed	15 pages per minute (single print mode), 26/31 pages per minute (ROPM mode)
Operating Systems	Windows XP, Windows XP x64, Windows 2000, Windows Vista™, and Windows Vista x64
Memory	Shared
Features	Two sided printing, N-up printing, paper source selection, output tray selection, fit to page, image adjustment, watermarks, smoothing, photo enhancement, and ROMP
PC Interface	USB 2.0 port

PCL® 6 Network Print Controller (optional)

PDL	PCL® 6 (XL)/PCL5e compatible
Resolution	1200 x 600 dpi (enhanced), 600 dpi, 300 dpi
Print Speed	26/31 pages per minute
Operating Systems	Windows XP, Windows XP x64, Windows 2000, Windows Vista, and Windows Vista x64, Windows Server® 2003/x64, Windows Server® 2008/x64, Sun™ Solaris 2.3 to 2.5/2.6, HP-UX 9.x/10.x, AIX 4.xx, BSD Linux, Unix®, Novell® Netware® 3.x/4.x/5.x/6.0, MAC OS, MAC OS® 9.0-9.22, OS X 10.2.8, 10.3.9, 10.4.11, 10.5-10.5.6
Software	Print driver, Printer Status Monitor, Printer Administration Utility, PC fax driver ¹
Memory	64 MB standard, expandable to 320 MB
Performance	300 MHz RISC Processor
Features	Binding edge, N-up printing, different cover page/last page, transparency inserts, carbon copy print mode, continuous printing, overlay, fit to page, watermarks, PIN printing, print hold, proof print, print auditor, print smoothing, offset print, font/form downloads, and direct print function ¹
Hardware Interface	RJ-45 Ethernet connection
Type	10/100 BaseT
Network Protocols	TCP/IP for Windows, IPV4/IPV6, Apple®/Macintosh®, and Unix environments, IPX/SPX for Novell environments, and AppleTalk® for Macintosh® environments
Printing Protocols	PServer/RPrint for Netware environments, LPR, IPP, PAP (Ethernal®, AppleTalk®), FTP, NetBeui, Raw Port 9100, HTTP, HTTPS, POP3 ¹
Network Security	IP/Mac Address Filtering, protocol enable/disable, SSL Encryption, IPsec ¹

Network Scanning Kit (optional)¹

Type	Flat bed monochrome scanning system
Original Feed System	Platen/document feeder, simplex/duplex with RSPF
Resolution	200 dpi, 300 dpi, 600 dpi
Image Format	TIFF, PDF
Scan Destinations	E-mail, Desktop, FTP, URL
Destination Profiles	Up to 200
Software	Sharpdesk® Document Management Software (10-user license included)

Super G3 Fax Kit (optional)

Transmission Mode	Super G3, G3
Modem Speed	33.6 KBPS ³
Compression	JBIG, MMR, MR, MH
Scanning Method	Sheet fed simplex or duplex or book
Max. Transmit Resolution	400 dpi (ultra-fine)
Transmission Speed	Approximately 2 seconds with JBIG ^{3,4}
Auto Dialing Methods	500 auto dial/group dial destinations
Group Dialing	Up to 200 destinations
Broadcasting	Up to 200 destinations
Programs	8 profiles
Department Control	100 profiles
Memory	2 MB standard/10 MB max. (8 MB option)
Halftone	256 levels
Timer Functions	Up to 50 jobs
Features	F-Code transmission/reception, confidential communication, quick on-line transmission, anti-junk fax reception, out of paper memory reception, and PC faxing

Optional Equipment

MX-DE10	500-sheet x 1 drawer paper feed unit
MX-DE11	500-sheet x 2 drawers paper feed unit
MX-FN13	Inner Finisher
MX-TR11	Job Separator Tray
MX-TE10	Exit Tray Unit
MX-PB12	PCL6 Compatible Network Print Controller with network interface
MX-NSX1	Network Scanning Kit ¹
MX-PK10	Postscript® 3™ Compatible Expansion Kit ¹
AR-FX7	Super G3 Fax Kit
AR-MM9	8 MB fax upgrade memory
MX-AMX1	Application Integration Module ¹
MX-FR17U	Commercial Data Security Kit (MX-M260) ⁵
MX-FR18U	Commercial Data Security Kit (MX-M310) ⁵
AR-PF1	Bar Code Font Kit ¹
AR-D5133NT	Digital Power Filter
MX-DS11	High Stand (use with 2-tray configuration)
MX-DS12	Low Stand (use with 3 or 4-tray configuration)
Supplies	
MX-312NT	Toner Cartridge
MX-312NV	Developer
MX-312NR	Drum Cartridge

¹ Some features require optional equipment.

² Capacity is based on letter size paper.

³ Actual transmission speed and time will vary based on line conditions

⁴ Based on Sharp Standard Test Chart with approximately 700 characters, letter size in standard resolution.

⁵ Not available at time of launch.



SHARP ELECTRONICS CORPORATION
Sharp Plaza, Mahwah, NJ 07495-1163
1-800-BE-SHARP • www.sharpsusa.com

Design and Specifications subject to change without notice. Sharp, Sharp OSA, Sharpdesk, My Sharp and all related trademarks are trademarks or registered trademarks of Sharp Corporation and/or its affiliated companies. Windows, Windows NT, Windows Server and Windows Vista are trademarks or registered trademarks of Microsoft Corporation. All other trademarks are the property of their respective owners.